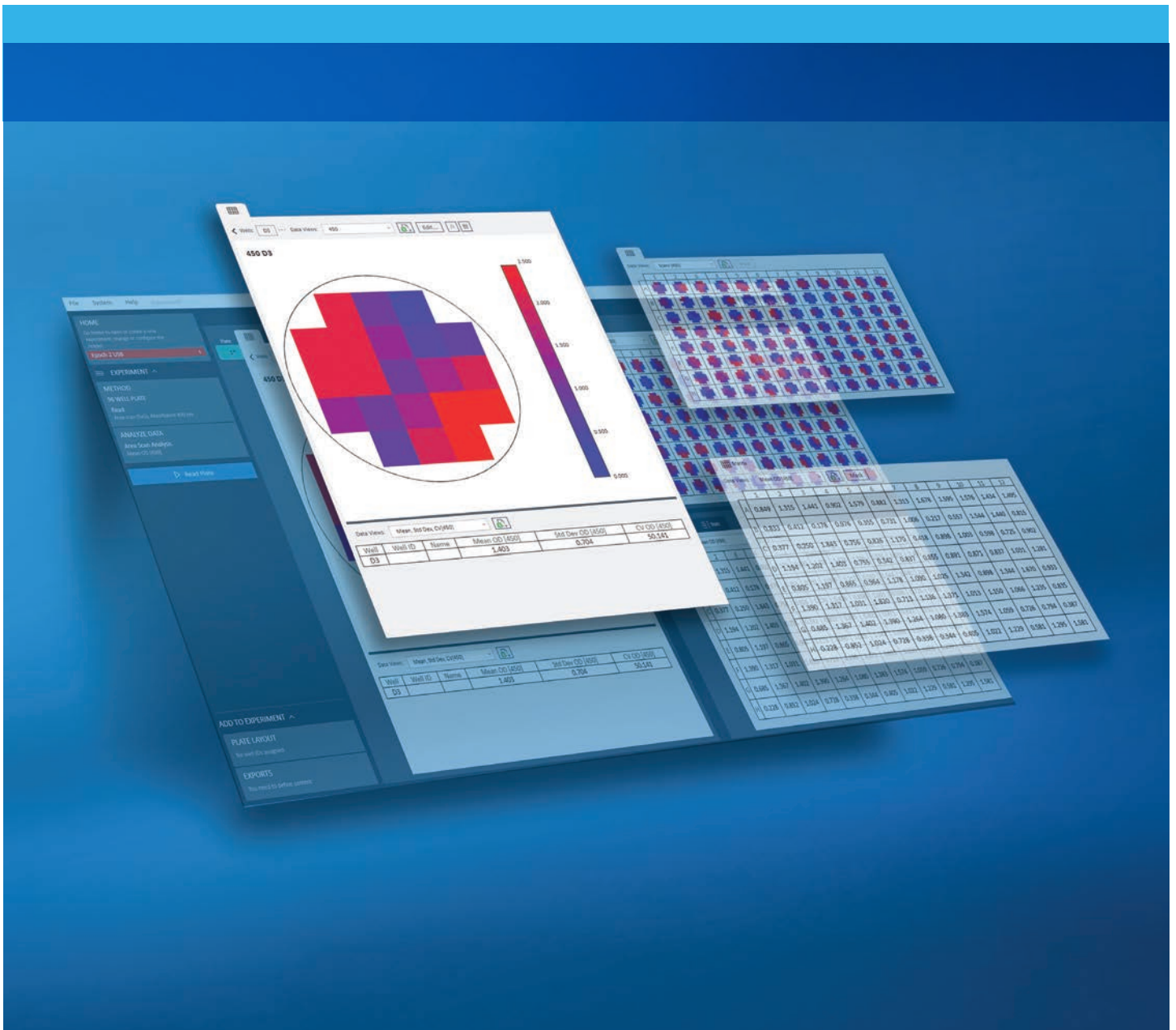


Agilent BioTek Gen6 Data Analysis Software

Walk-up usability for Agilent BioTek microplate readers



Agilent BioTek Gen6 Data Analysis Software

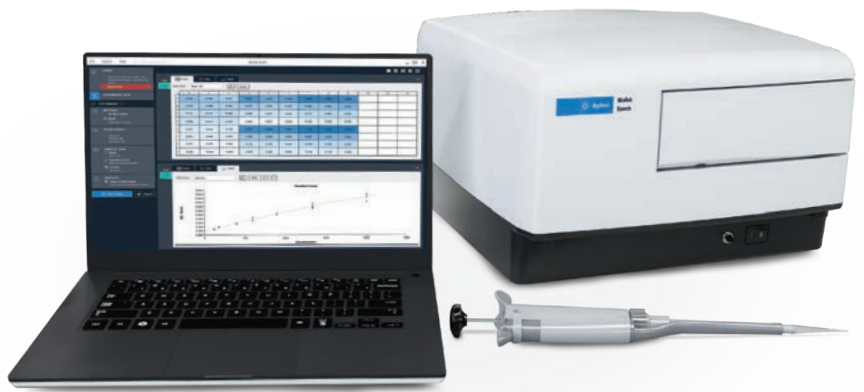


Agilent BioTek Gen6 data analysis software for microplate readers provides an intuitive interface for both new and experienced users. It provides full control of Agilent BioTek multimode and absorbance readers for plate reading in a broad range of microplates, for both end-point and kinetic assays. Reading parameters, plate layout, and data analysis definition is an easy, step-by-step process for quantitative and qualitative assays. Well data and analysis results can be exported automatically or fully customized to suit data-reporting requirements.

Walk-up usability



Both new and experienced users will be able to walk up and use Gen6 without extensive training.



Agilent BioTek Epoch microplate spectrophotometer.

Set up	Read	Analyze	Move on																							
plate layout	in one minute	automatically	with your research																							
<table border="1"> <thead> <tr> <th colspan="3">Assign Well IDs</th> </tr> <tr> <th></th> <th>1</th> <th>2</th> <th>3</th> </tr> </thead> <tbody> <tr> <td>A</td> <td>BLK</td> <td>BLK</td> <td>SPL3</td> </tr> <tr> <td>B</td> <td>STD1 10</td> <td>STD1 10</td> <td>SPL4</td> </tr> <tr> <td>C</td> <td>STDB1 10</td> <td>STDB1 10</td> <td>SPL5</td> </tr> <tr> <td></td> <td>STDC1</td> <td>STDC1</td> <td>SPL6</td> </tr> </tbody> </table>	Assign Well IDs				1	2	3	A	BLK	BLK	SPL3	B	STD1 10	STD1 10	SPL4	C	STDB1 10	STDB1 10	SPL5		STDC1	STDC1	SPL6			
Assign Well IDs																										
	1	2	3																							
A	BLK	BLK	SPL3																							
B	STD1 10	STD1 10	SPL4																							
C	STDB1 10	STDB1 10	SPL5																							
	STDC1	STDC1	SPL6																							

Set up assay, analyze results, and export data in minutes

With Gen6, users can set up their plate, read, and analyze results in minutes.

Recent	Examples
File Name	
Abs - Quantitative ELISA with Cutoff.xpt	
FI - 3D Spectral Scan.xpt	
FP - Parallel Line Analysis EC50 Predictor.xpt	
Lum - GloSensor Titration EC50.xpt	

EXPERIMENT ^

METHOD
96 WELL PLATE
Read
Fluorescence Intensity, 485/20,520/20
Test Read

PLATE LAYOUT
Samples (86)
Standards (10)

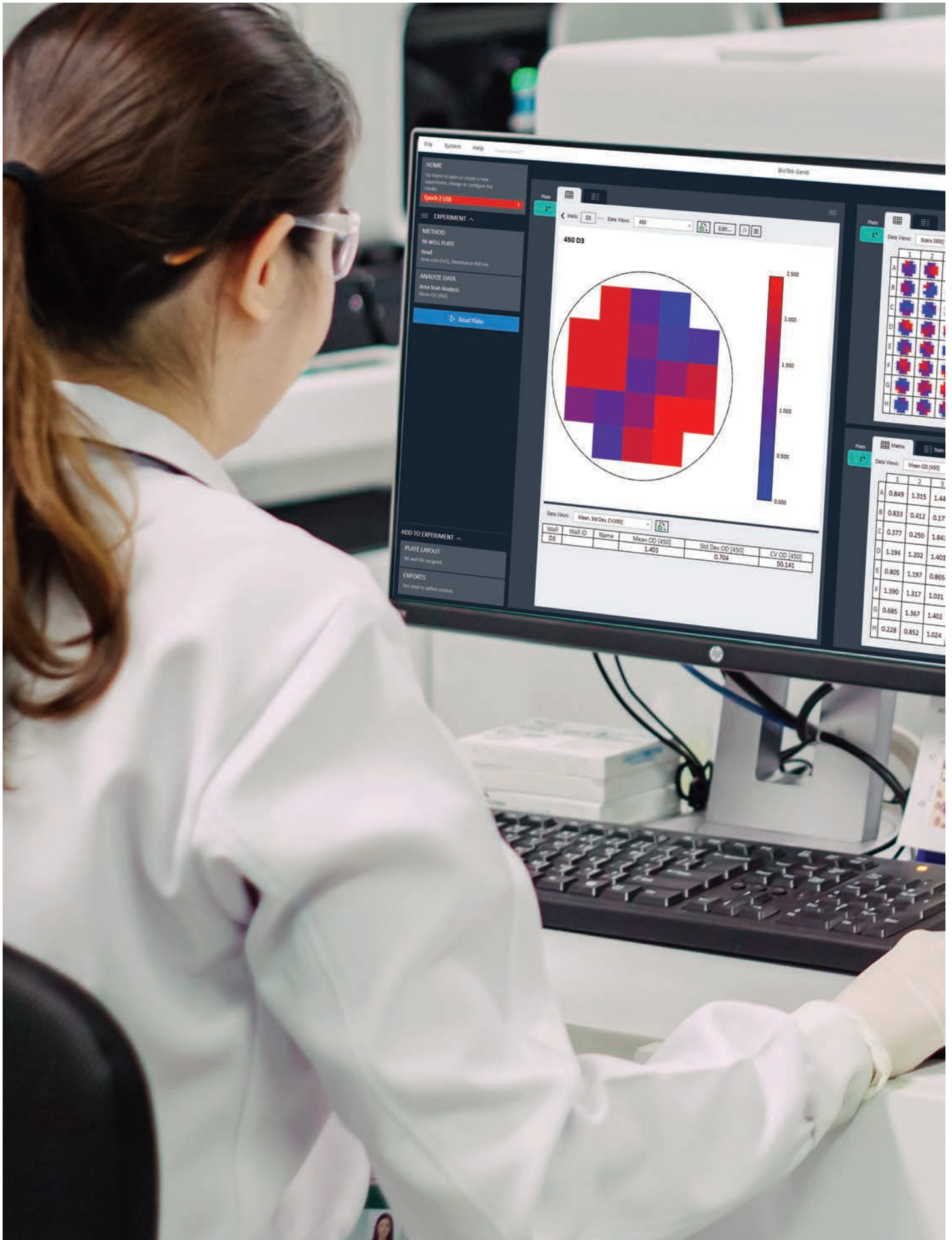
ANALYZE DATA
Custom Curve - PLA
RiboGreen Standard Curve, Concentration

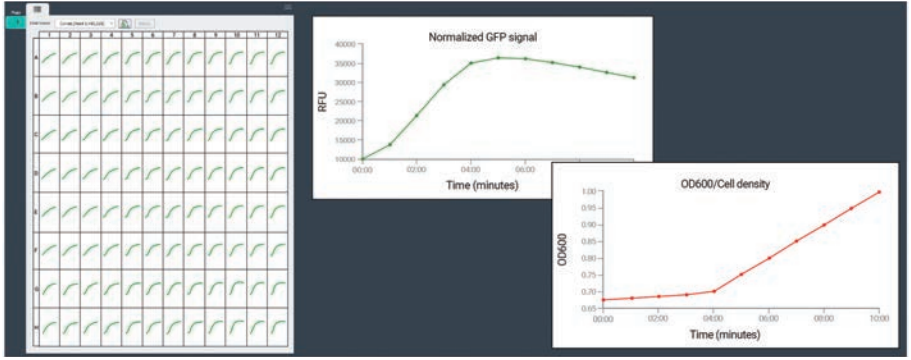
EXPORTS
RiboGreen High Concentration
Export to Excel, Automatic content

Read Plate

Prebuilt experiment templates in Gen6

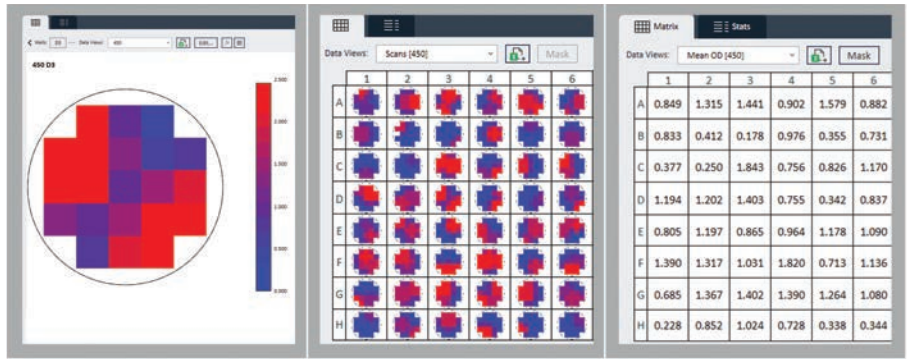
Prebuilt experiment templates allow new users to quickly and easily get started with common assays and applications within Gen6.





Advanced read functionality—multimode kinetics

Gen6 contains advanced functionality for kinetic assays. Users can easily set up time-course experiments and visualize data in real time as the microplate reader collects it. Raw and calculated data can easily be exported with one click into Microsoft Excel.



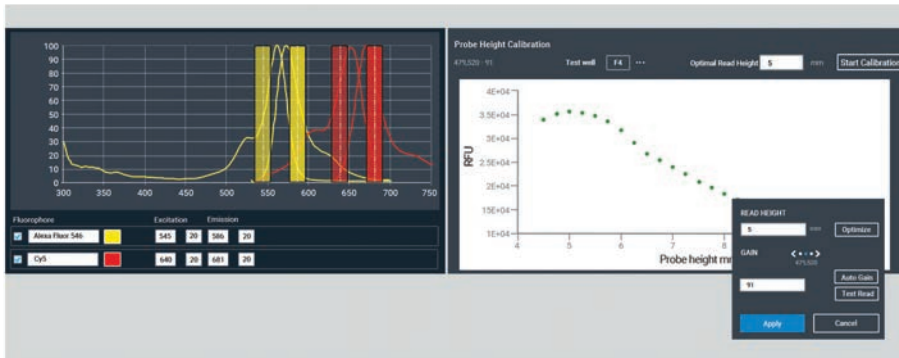
Advanced read functionality—area scans

Advanced reading modes, such as area scans, allow users to measure discrete points across a well for heterogeneous samples.



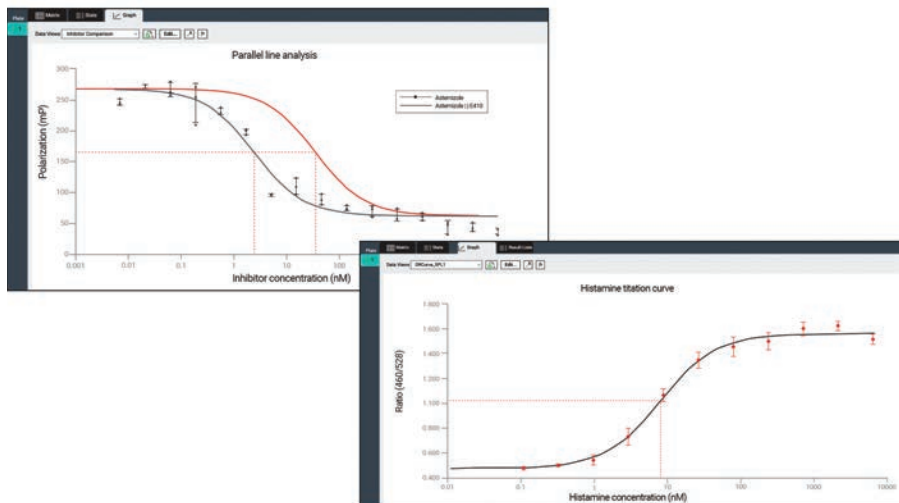
Agilent BioTek Synergy Neo2 hybrid multimode reader.





Automated data optimization tools

The built-in data optimization tools in Gen6 software make it simple to ensure the data you are gathering is being optimally acquired. Functions such as the fluorescence spectrum viewer and probe Z-height optimization provide users with certainty that they are getting the best sensitivity for their assays.



Advanced graphing options

Built-in graphing functionality enables a range of data analyses, including standard curve generation, dose-response curves, parallel line analysis and EC_{50} calculation.



Applications

- ELISA
- Growth curves
- Nucleic acid quantification
- Protein quantification
- Biomarker quantification
- Biologics drug discovery and development
- Environmental testing
- Food and beverage safety and quality tests

Compatible Agilent BioTek readers

- 800 TS absorbance reader
- Epoch and Epoch 2 microplate spectrophotometers
- Synergy Neo2 hybrid multimode reader
- Synergy H1, HTX, and LX multimode readers

Learn more and buy online:

www.agilent.com/lifesciences/biotek

Get answers to your technical questions and
access resources in the Agilent Community:

community.agilent.com

U.S. and Canada

1-800-227-9770

agilent_inquiries@agilent.com

Europe

info_agilent@agilent.com

Asia Pacific

inquiry_lsca@agilent.com

RA44656.5549537037

This information is subject to change without notice.

© Agilent Technologies, Inc. 2022, 2023
Published in the USA, May 26, 2023
5994-4805EN

